

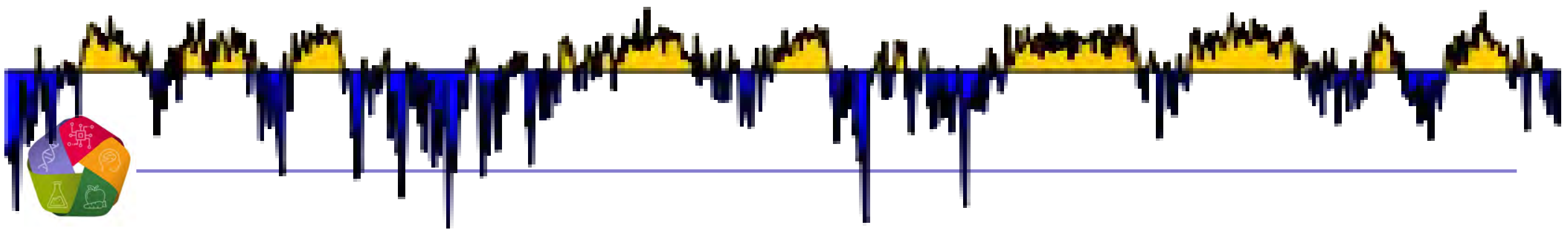
Conformazione della cromatina nell'invecchiamento muscolare

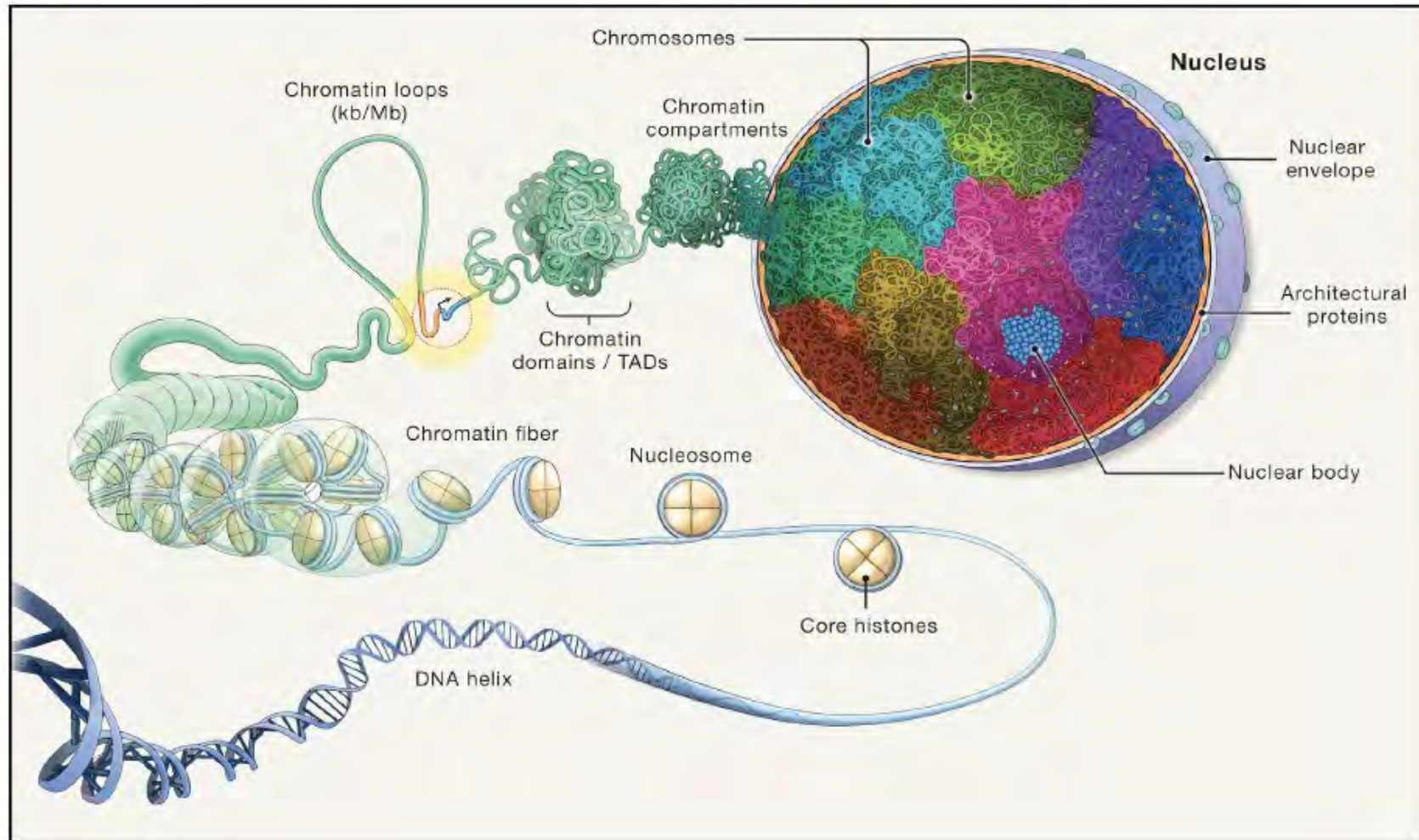
Chiara Lanzuolo

Chromatin and Nuclear Architecture Laboratory, CNR and INGM



NUTRAGE
Consiglio Nazionale delle Ricerche



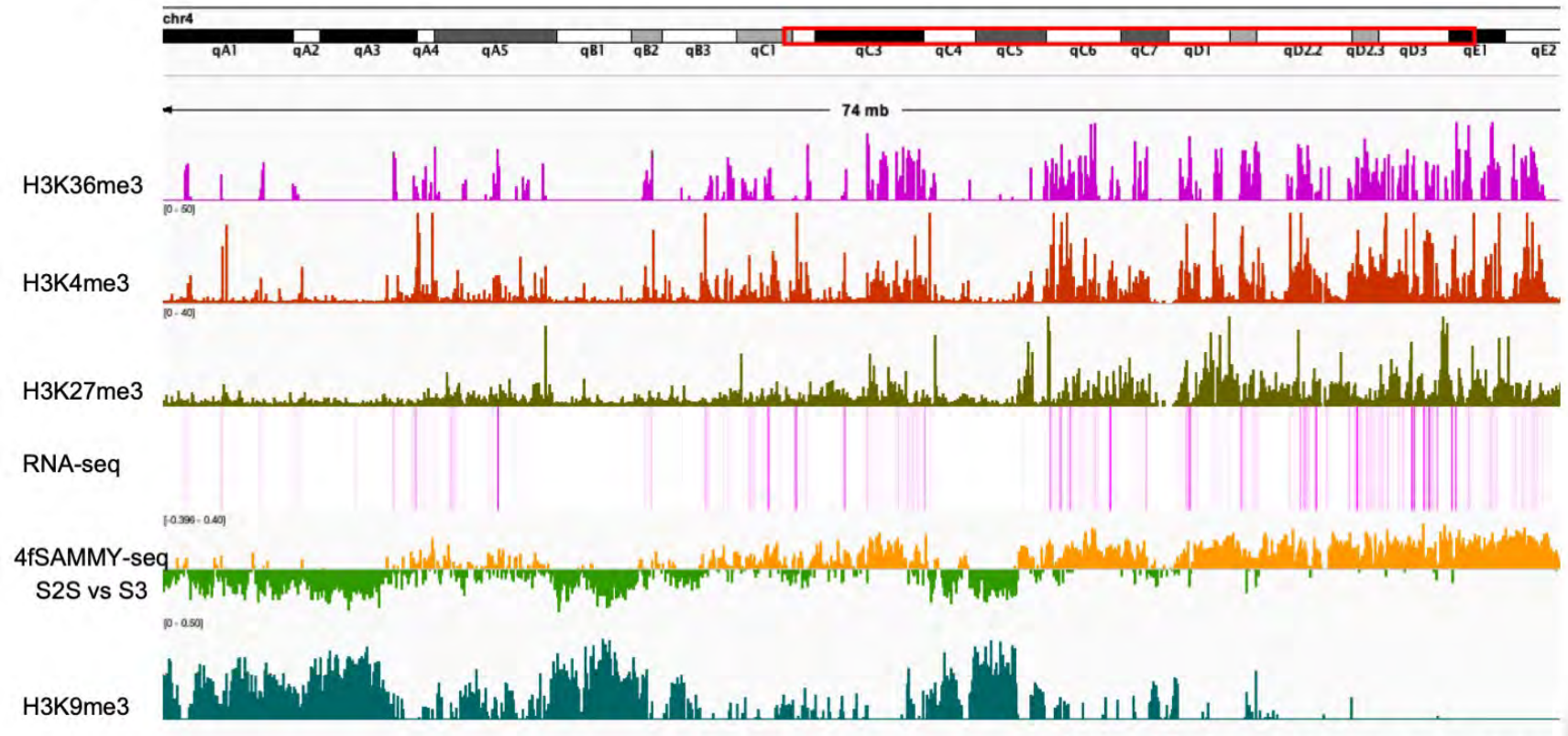
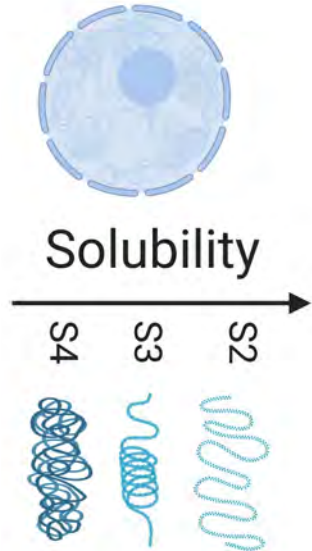


Our technology:

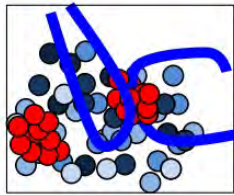
The Sequential Analysis of MacroMolecules accessibility (SAMMY-seq) (European Patent No. 18200482.0)



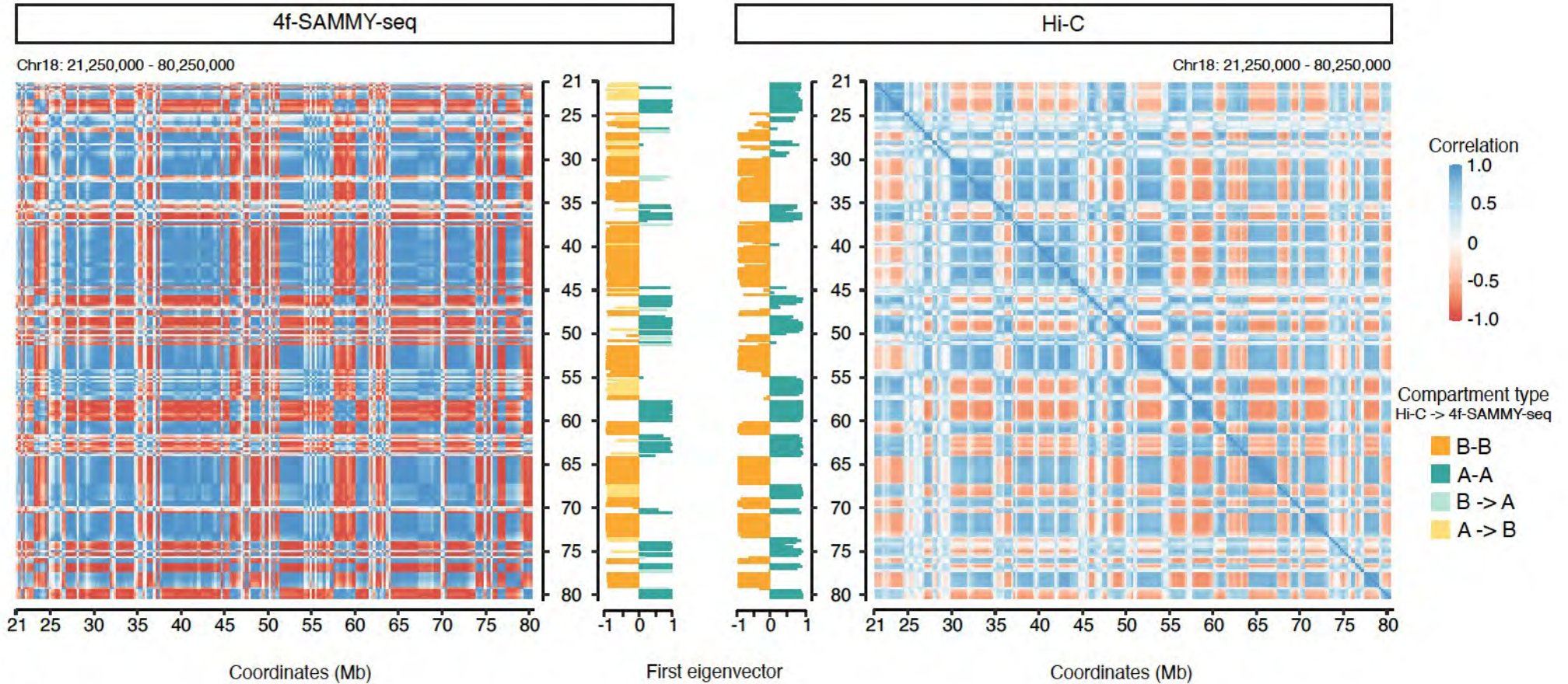
NUTRAGE
Consiglio Nazionale delle Ricerche



4fSAMMY-seq recapitulates compartment analysis as seen by HiC:



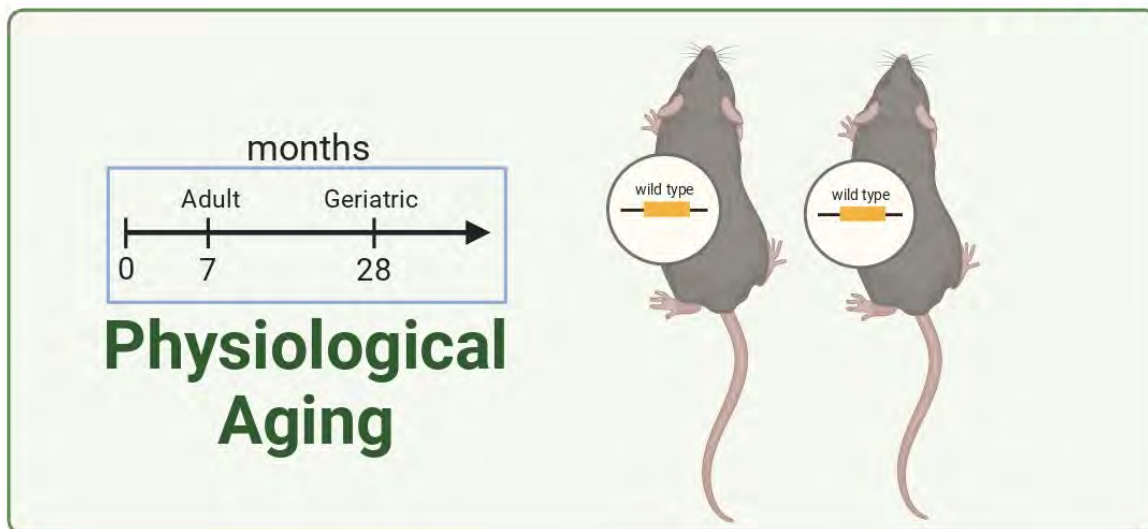
Same nuclear positions \equiv same solubility?



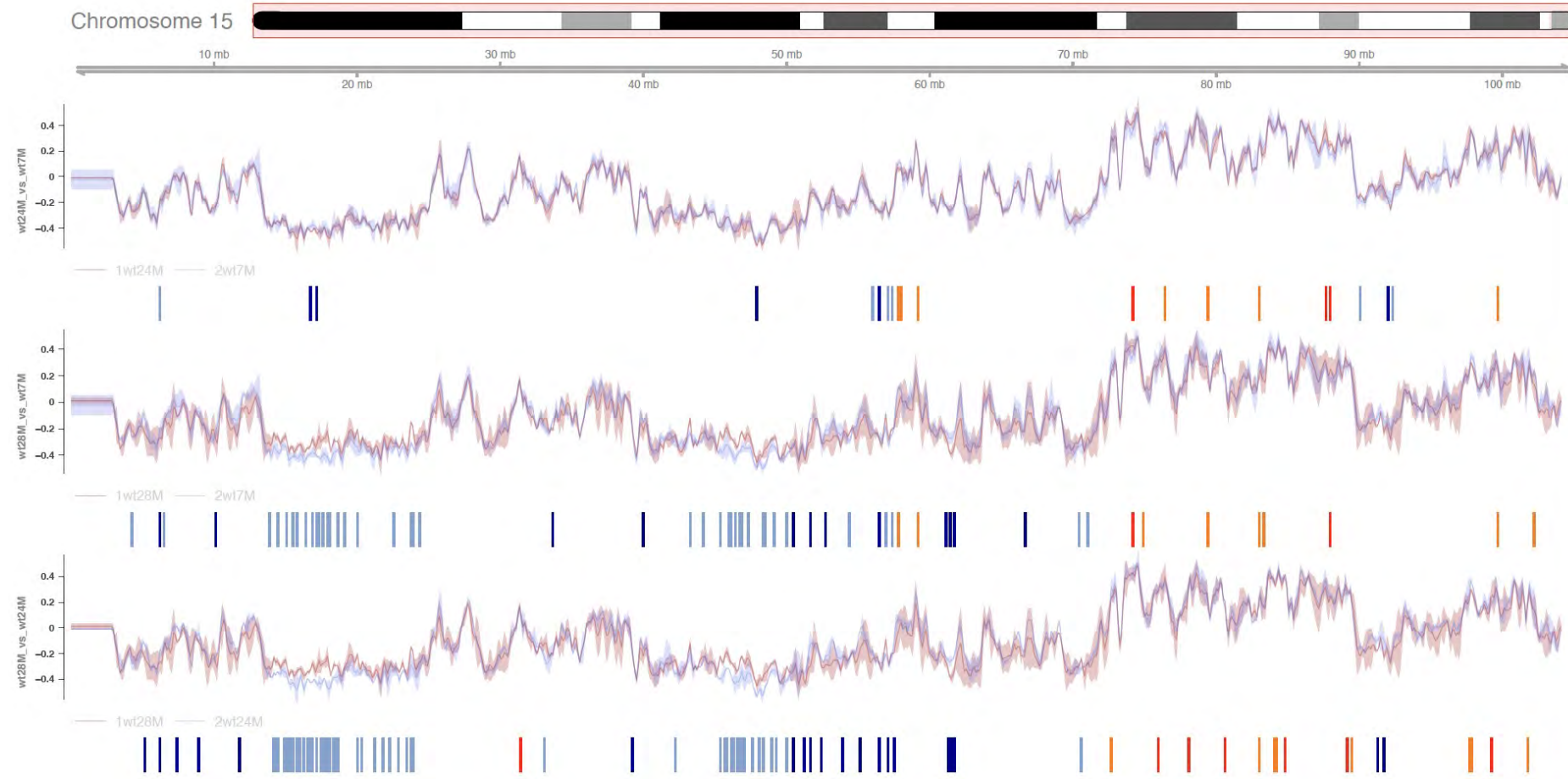


The mice models: geriatric and progeric mice

Mouse model



Heterochromatin is progressively affected in aging



Solubility

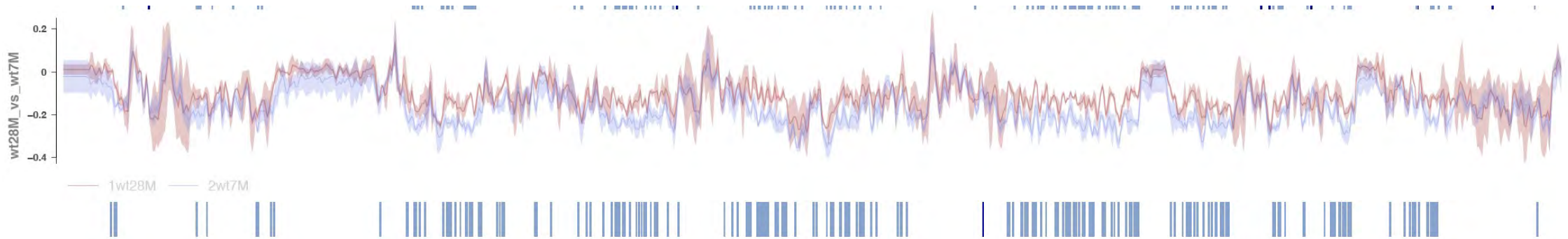
+++ S2S S3
--- S2S S3



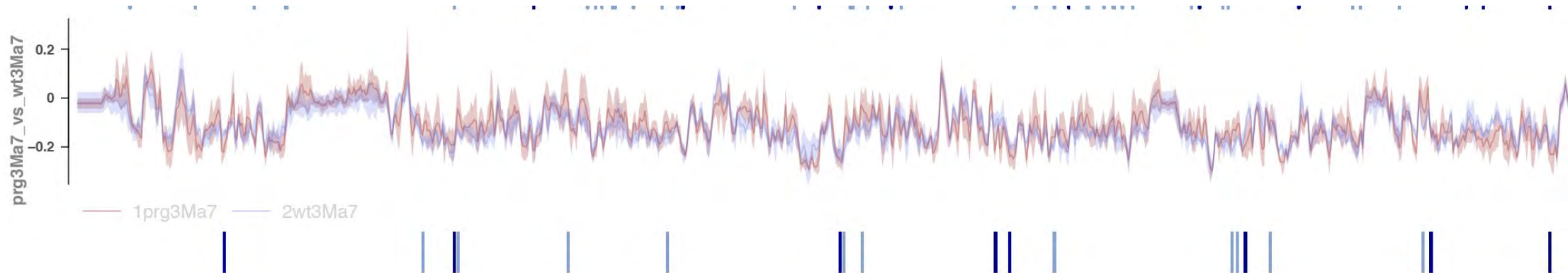
X chromosome is the most affected in geriatric mice



Geriatric vs adult



Progeric vs wt





INGM
ISTITUTO NAZIONALE GENETICA
"Romeo ed Enrica Invernizzi"



Consiglio Nazionale delle Ricerche



Francesco Ferrari

Federica Lucini

Cristiano Petrini

Giovanni Lembo

Koustav Pal

Elisa Salviato

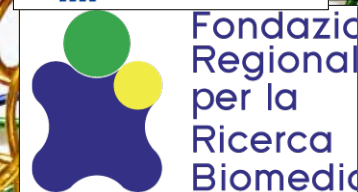
Valentina Rosti
Emanuele di Patrizio Soldateschi



Fondazione **CARIPLO**



FMTELETHON
INNOVER POUR GUERIR



NUTRAGE
Consiglio Nazionale delle Ricerche

INGM Microscopy Unit

Chiara Cordiglieri

Alessandra Fasciani

INGM Flow Cytometry

Maria Cristina Crosti

Maria Lucia Sarnicola

Policlinico Sequencing Unit

Valentina Vaira

Francesco Gentile

&

Genomic Unit at European Institute of Oncology (I

